



# PORTA PRO

PORTABLE HAIR  
STRAIGHTENING BRUSH  
USER MANUAL

✉ [csteam@tymo-tech.com](mailto:csteam@tymo-tech.com)





Thank you for choosing TYMO  
PORTA PRO Portable Hair  
Straightening Brush, Please read this  
user manual carefully before use.

## **WARNING**

THESE WARNINGS APPLY TO THE  
APPLIANCE, AND ALSO WHERE  
APPLICABLE TO ALL TOOLS,  
ACCESSORIES, CHARGERS OR  
MAINS ADAPTORS. TO REDUCE  
THE RISK OF FIRE, ELECTRIC  
SHOCK, OR INJURY:

1. This appliance is not intended for use by persons (including children) with reduced physical, sensory or mental capabilities, or lack of experience and knowledge, unless they have been given supervision or instruction concerning use of the appliance by a person responsible for their safety. Cleaning and user maintenance shall not be made by children without supervision.
2. Do not allow to be used as a toy. Close attention is necessary when used by or near children. Children should be supervised to ensure that they do not play with the appliance.
3. DO NOT use an extension cord with this appliance.

4. This appliance has a non-self resetting thermal cut out safety device to prevent overheating.

**WARNING:** Do not use this appliance near bathtubs, showers, basins or other vessels containing water.



5. Do not use the appliance for any other purpose than straightening hair.

6. Do not handle any part of the plug or appliance with wet hands.


7. Do not use any lubricants, cleaning agents, polishes, or air fresheners on any part of the appliance.

8. Contact the TYMO Customer Services Team when a service or repair is required. Do not disassemble the appliance as incorrect reassembly may result in an electric shock or fire.

9. When the appliance has been unpacked, check it if it has transport damage and ensure that all parts have been delivered. If parts are missing or the appliance has been damaged, please email the TYMO Customer Services Team.

10. If the appliance does not work, or is not working properly, please email the TYMO Customer Services Team. **DO NOT** attempt to repair the appliance. Repair work by the

unqualified persons can cause serious risk to the user and will avoid the warranty.

11.  The symbol indicates DC voltage.



## **RECYCLING**

This product bears the selective electrical and electronic equipment (WEEE). This means that this product must be handled pursuant to European directive 2012/19/EU to be recycled or dismantled to minimize its impact on the environment. User has the choice to give his product to a competent recycling organization or to the retailer when he buys a new electrical or electronic equipment

This product can be used across EU member states.

## Specifications

Product Description:

Portable Hair Straightening Brush

Model No.: HC122

Input: 5V  $\overline{\text{---}}$

Rating Power: 28W

Use only for Class 2 Power Supply

Model No.: A205

Input: 100-240V~ 50/60Hz 1.5A Max

Power: 65W Max

Output: 5.0V  $\overline{\text{---}}$  3.0A, 9.0V  $\overline{\text{---}}$  3.0A,

12.0V  $\overline{\text{---}}$  4.0A, 15.0V  $\overline{\text{---}}$  4.0A

20.0V  $\overline{\text{---}}$  3.25A

Heating Method: MCH Heating

Heating Temperature: 320°F-395°F

( 160°C-200°C )

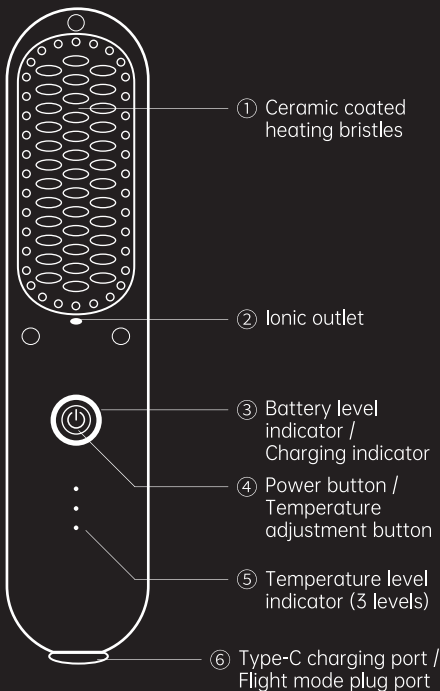
Runtime: Up to 30 minutes

\* Runtime time will vary depending on the heat setting, as well as hair type and length.

## Packaging List

Packaging List	Quantity
Portable Hair Straightening Brush	1
Travel bag	1
Hairpins	2
Type-C charge cable	1
Flight mode plug	1
Class 2 Power Supply	1

## Product Overview



⑦ Class 2 Power Supply

⑧ Type-C charge cable

## How to use

### Basic Operations

#### Cordless Mode:

(1) **Power on:** Press and hold the “Power button” for 2 seconds. The temperature level indicator turns on. The default temperature is level 2 (360°F), and automatically engage the negative ion feature.



#### Above 80%

A blue indicator denotes a battery



#### Between 10% and 20%

An orange indicator signifies a battery level between 10% and 20%



#### Below 10%

A flashing orange indicator alerts the user to a battery level below 10%

(2) **Temperature Setting:** Briefly press the power button to change the heat level. The corresponding temperature indicator will flash during the heating phase and become steady upon reaching the designated temperature. Choose the temperature according to your hair type; recommended settings are: 320°F (160°C):  
For bleached, damaged, or fine hair



360°F (180°C):

For normal or slightly coarse hair.

395°F (200°C):

For thick and coarse hair.

(3) **Power Off:** Long-press the power button for 2 seconds to turn off the device. All indicators will extinguish, and the heating element will cease operation.

### Important Notes

1. Initial Setup: Prior to the first use, ensure the device is fully charged and disengage the flight mode.

>The product cannot be powered on in flight mode. It must be taken out of flight mode by disconnecting the flight mode plug to function normally.

>During the charging process, the battery indicator will emit a flashing blue light. A steady light will indicate a full charge.

2. Fast Charging Compatibility: The device is compliant with PD and QC 3.0 fast charging protocols. The approximate charging time is 2 hours.

3. Temperature Restrictions:

Charging is permissible only when the device's temperature is below 104°F (40°C).

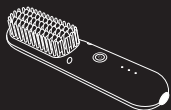
4. Battery Maintenance: For optimal battery lifespan, it is advised to perform a full charge at least once every three months.

## Corded Mode

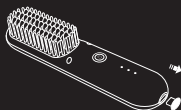
To activate Corded Mode, connect the device to the designated TYMO charger using a USB-C to USB-C cable. The battery indicator light will flash once and then stay lit in blue. Note: Use only the TYMO-branded charger and USB-C to USB-C cable provided with the device.

## Flight Mode

Ensure that the product is in cordless mode for regular use and in flight mode when carrying the device to prevent unintended activation.



Flight mode



Cordless mode

## Styling Guide

### A. Operation steps for straightening hair

a. Split the hair into strands evenly, grasp and take up, put the prepared hair strand into brush bristles starting from the hair root.

- b. Slide from the hair root downward to the end of hair smoothly.
- c. Repeat the above actions till you obtain the straight hair you desire.



## B.Operation steps for styling hair

- a. For outward curling-up styling, perform operation steps for straightening hair, grasp the hair and curl up outwards around brush, at the tip of hair for 3-5 seconds and repeat for 3 times.
- b. For inward curling-up styling, perform operation steps for straightening hair, grasp the hair and curl up inwards around brush, stay at the tip of hair for 3-5 seconds and repeat for 3 times.



## ⚠ NOTE

- (1) While using the appliance, the

hair shall be under dry state. Otherwise, it may fail to reach the styling effect or desired result.

(2) The appliance has intelligent features of high efficiency and energy saving. After 30 minutes working, it will be switched off automatically. If it is put into use again, you can press the "Power Button" key to restart the appliance.

(3) When carrying this product out, please turn it off and insert the flight mode plug to prevent it from mistouching.

(4) It is normal that the appliance will get warm while using and charging, Unplug the flight mode plug from hair straightener brush before using, (The appliance will shut off when plugged into the flight mode plug during use).

## Cordless + Rechargeable

Portable and compact design enable easy operation and travel friendly.

## Versatile Power Options

Ditch downtime and seamlessly switch to wired power mode by connecting the adaptor.

## High-performance lithium battery

High-performance lithium battery with high capacity, safer, more runtime, and longer battery life.

## Safety Protection

Safety lock with Flight mode plug and auto shut off in 30 minutes.

## Negative ions

Advanced ionic technology, less frizz, more shine.

## Patented air sandwich bristle design

Distribute even heat and reduce hair pulling by patented bristle design.

## CAUTION

When the appliance is used for the first time, slight burned smell or little mist may be produced, which is from remaining test

material on metal parts of the appliance and will disappear in a few seconds. It is a normal condition, please feel free to use it. If the temperature is set too high, it will take the risk of burning hair! You shall choose the suitable temperature and use the appliance properly according to your hair condition, otherwise, it may make your hair dry or even scald.

## **Maintenance Instructions**

This appliance is virtually maintenance-free. It contains no serviceable parts. Keep heated surfaces clean and free of dust, dirt, and hair spray. If cleaning becomes necessary, turn off the appliance and wipe the exterior with cloth. If any malfunction occurs, do not attempt to repair it. This appliance has no user-serviceable parts.

## Storage

Allow appliance to cool and store out of reach of children in a safe, dry location. Never wrap the Type-C cord around the appliance because this will cause the cord to wear prematurely and break. Handle cord carefully for longer life and avoid jerking, bending sharply, twisting, or straining cord, especially at plug connections. Please store your product at an ambient temperature range of 39°F ~ 104°F ( 4°C-40°C )when it is not in use.

## FCC Statement

This device complies with Part 15 of the FCC Rule. Operation is subject to the following two conditions:  
(1) This device may not cause harmful interference. (2) This device must accept any interference received, including interference that may cause undesired operation.

## **WARNING**

Changes or modifications to this unit not expressly approved by the party responsible for compliance could avoid the user's authority to operate the equipment.

## **NOTE:**

This equipment has been tested and found to comply with the limits for a Class B digital device, protection against harmful interference in a residential installation. This equipment generates, uses and can radiate radio frequency energy and, if not installed communications. However, there is no guarantee not occur in a particular installation.

If this that interference will equipmentdoes cause harmful interference toradio or television reception, whichcan be determined by turning theequipment off and on, the user is encouraged to try to correct the interference by one or more of the following measures:

- Reorient or relocate the receiving antenna.
- Increase the separation between the equipment and receiver.
- Connect the equipment into an



outlet on a circuit different from that to which the receiver is connected.

- Consult the dealer or an experienced radio/TV technician for help.

## Warranty

The product warranty is governed by regulations in force and applied upon showing the original legible purchase receipt complete of all its parts. For support service under warranty, please take the original purchase receipt to the store where the product was purchased.

**Membership Registration**  
– Go Online NOW!



SCAN TO JOIN







[www.tymobeauty.com](http://www.tymobeauty.com)



@tymo



@tymo\_fashiontech