



CURLGO

CORDLESS AUTOMATIC CURLING IRON
USER MANUAL

csteam@tymo-tech.com



Thank you for choosing TYMO CURLGO Cordless Automatic Curling Iron , Please read this user manual carefully before use.

WARNING

THESE WARNINGS APPLY TO THE APPLIANCE, AND ALSO WHERE APPLICABLE TO ALL TOOLS, ACCESSORIES, CHARGERS OR MAINS ADAPTORS. TO REDUCE THE RISK OF FIRE, ELECTRIC SHOCK, OR INJURY:

1. This appliance is not intended for use by persons (including children) with reduced physical, sensory or mental capabilities, or lack of experience and knowledge, unless they have been given supervision or instruction concerning use of the appliance by a person responsible for their safety. Cleaning and user maintenance shall not be made by children without supervision.
2. Do not allow to be used as a toy. Close attention is necessary when used by or near children. Children should be supervised to ensure that they do not play with the appliance.
3. DO NOT use an extension cord with this appliance.

WARNING: Do not use this appliance near bathtubs, showers, basins or other vessels containing water.



4. Do not use the appliance for any other purpose than described in this manual.
5. Do not place near flammable materials in use and avoid covering flammable clothing or items. After use, do not set on flammable surfaces like clothing or mattresses until cooled. Always disconnect the power when not in use.
6. Do not handle any part of the plug or appliance with wet hands.
7. Do not use any lubricants, cleaning agents, polishes, or air fresheners on any part of the appliance.
8. Contact the TYMO Customer Services Team when a service or repair is required. Do not disassemble the appliance as incorrect reassembly may result in an electric shock or fire.
9. When the appliance has been unpacked, check it if it has transport damage and ensure that all parts have been delivered. If parts are missing or the

appliance has been damaged, please email the TYMO Customer Services Team.

10.If the appliance does not work, or is not working properly, please email the TYMO Customer Services Team. DO NOT attempt to repair the appliance. Repair work by the unqualified persons can cause serious risk to the user and will avoid the warranty.

10.  The symbol indicates DC voltage.



RECYCLING

This product bears the selective electrical and electronic equipment (WEEE). This means that this product must be handled pursuant to European directive 2012/19/EU to be recycled or dismantled to minimize its impact on the environment. User has the choice to give his product to a competent recycling organization or to the retailer when he buys a new electrical or electronic equipment

This product can be used across EU member states.

Specifications

Product Description:

Cordless Automatic Curling Iron

Model NO.:HC520P

Size of Curling barrel: 1 inch

Input:12.0V DC

Heating Method: Heating Film

Heating Temperature: 320°F-365°F-410°F
(160°C-185°C-210°C)

Runtime: UP to 60 minutes

*Runtime time will vary depending on the heat setting, as well as hair type and length.

Fast Charging Power Supply

Model No.:A205

Input:100-240V~ 50-60Hz 1.5A Max

Output:

5V = 3.0A 9V = 3.0A

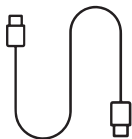
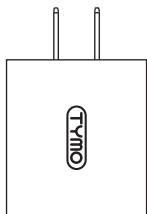
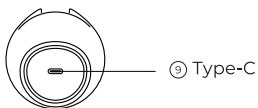
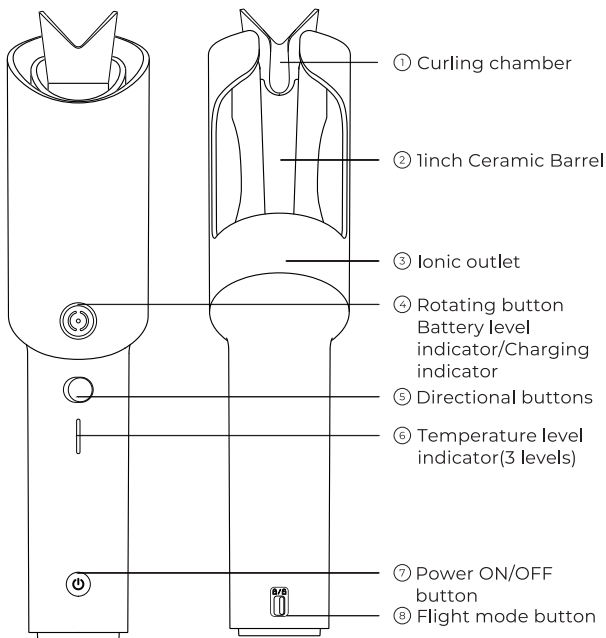
12V = 4.0A 15V = 4.0A

20V = 3.25A(65W Max)

Packaging List

Packaging List	Quantity
Cordless Automatic Curling Iron	1
Fast Charging Power Supply	1
USB Type-C Charge Cable	1

Product Overview



How to Use

Basic Operations

Cordless Mode:

1. Power On: Press and hold the power button for 2 seconds to turn on. The device will initiate at a default temperature of 365° F (185°C) and automatically engage the negative ion feature.

2. Temperature Setting: Press the temperature button to select the appropriate temperature level. The recommended temperature levels for different hair types are:

320°F (160°C): For bleached, damaged, or fine hair.

365°F (185°C): For slightly fine to normal hair.

410°F (210°C): For thick and coarse hair.

3. Power Off: Long-press the power button for 2 seconds to turn off the device.

All indicators will extinguish, and the heating element will cease operation.

4. When the battery is not low, the ring-shaped indicator light stays blue. When the battery is low and below 10%, the indicator light stays orange. When the battery is below 5%, the indicator light flashes orange.



Above 10%

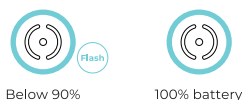


Between 5% and 10%



Below 5%

5. During charging, when the battery is below 90%, the ring-shaped indicator light breathes and flashes blue. When the battery is above 90%, the blue light stays on. The full charging time takes 100 minutes, and the maximum battery life is 60 minutes.



Important Notes

1.Initial Setup: Prior to the first use, ensure the device is fully charged and disengage the flight mode.

>A dual-tone beep will indicate that the device is in flight mode. Slide the flight mode button located on the back of the device to disengage.

>During the charging process, the battery indicator will emit a flashing white light. A steady light will indicate a full charge.

2.Fast Charging Compatibility: The device is compliant with QC 3.0 fast charging protocols. The approximate charging time is 2 hours.

3.Temperature Restrictions: Charging is permissible only when the device's temperature is below 104°F (40°C).

4. Battery Maintenance: For optimal battery lifespan, it is advised to perform a full charge at least once every three months.

Corded Mode

The product supports corded mode, which means all functions can be used immediately by connecting to a fast-charging adapter when the battery is low or out of power. In corded mode, the blue light stays on.


*Note that corded mode requires the use of the TYMO standard charging cable and fast-charging adapter to function properly.

In cordless mode, the product is powered by a built-in battery.

Safety Lock


The TYMO Curlgo is equipped with a Flight Mode feature to prevent accidental activation when taking it out with you.

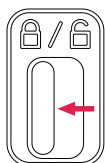
Activating Flight Mode (Lock):

Before carrying the device out, set the Flight Mode button to lock (). You won't be able to turn on the device by pressing and holding the Power button, and you will hear two beeps as

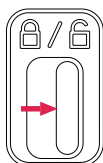
confirmation.

Deactivating Flight Mode (Unlock):

To use the device, set the Flight Mode button to unlock (). This will unlock the device, allowing you to power it on as usual using the Power button.



Locking Unavailable Mode



Unlocking Normal Mode

Operating Steps:

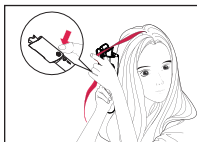
1. Make sure the product is in unlock mode before use, otherwise the product cannot be turned on.
2. Press and hold the power button for 2 seconds to power on the device.
3. After powering on the product, if the product is not in use, it will automatically shut down after 10 minutes.
4. When using the product, make sure that the hair is dry, otherwise it may not achieve the desired curling effect.
5. The negative ion function is always enabled by default when the product is in operation.

TYMO CURLGO Styling Guide:

- 1.Preparation: Wash and dry the hair thoroughly. Detangle all strands.
- 2.Settings: Select the desired temperature and curl direction based on the provided diagram.
- 3.Placement: Hold the device in a vertical orientation with the control buttons facing toward the head and the curl chamber positioned away from the head.
- 4.Sectioning: Section a 3/4-inch to 1-inch strand of hair section each time to prevent tangling.
- 5.Insertion: Place the designated hair section at a 90-degree angle into the curl chamber.
- 6.Curling Process: Depress the rotating button. The hair will be automatically drawn into the curl chamber.
- 7.Timing: Upon hearing the 8-second auditory signal, remove the device gently for fine hair. For coarser hair, extend the time by an additional 3-5 seconds.
- 8.Repetition: Repeat steps 2 through 7 as needed.



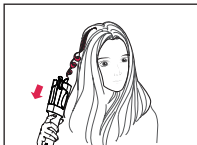
1. Place 3/4 inch to 1 inch section of hair into the slot



2. Press the rotate button. The hair will be automatically drawn into the curl chamber.



3. When hair is fully curled, you can press a button or wait for it to stop automatically.



4. Upon hearing the 8-second auditory signal, remove the device gently for fine hair. For coarser hair, extend the time by an additional 3-5 seconds.

* Recommended curling time for different hair lengths:

Shoulder Length	8s-10s
Chest Length	11s-13s
Below Chest Length	14s-16s

Tips

- > Adjust the heating time based on your hair length, but be cautious not to leave it on for too long to prevent hair damage.
- > Use smaller hair sections to prevent tangles.
- > If the hair becomes tangled, the TYMO CURLGO will automatically stop rotating. To address this, press the power button to deactivate the device. Carefully remove the tangled strands by releasing them section by section until all hair is freed.

Cordless Design

The cordless design makes it 20% lighter compared to traditional curling irons, making it easier to use and convenient to carry.

60-Minute Battery Life

Equipped with a high-capacity 3500mAh battery, it provides up to 60 minutes of continuous use for convenient one-click curling.

200 Million Negative Ions

Releases 200 million negative ions to reduce static and frizz in the hair.

Anti-tangle Mechanism

Intelligently detects tangles, promptly reverses to prevent hair pulling.

Built-in Timer

Auto beeps in 8 seconds to prevent excessive heat exposure.

10-Minute Auto Shut-off

Automatically shuts off if the device is idle for 10-minutes to add safety and reserve battery life.

T-GLOSS Ceramic Coating

In contrast to ordinary coatings, T-GLOSS ceramic coating enhances the moisture and shine of hair.

Anti-scald Design

Prevents burns during the curling process, making it easy for beginners to use.

Intelligent Temperature Monitoring

NTC sensors monitor temperature 1,000 times/sec, preventing heat damage.

CAUTION

During the first use of the appliance, a slight burned smell or mist may be produced due to remaining test material on the metal parts of the appliance. This is a normal occurrence and will disappear in a few seconds. If the temperature is set too high, it may cause hair burning! Choose the appropriate temperature based on your hair condition to avoid drying or scalding.

Maintenance Instructions

This appliance is virtually maintenance-free and contains no serviceable parts. Ensure that the heated surfaces are clean and free of dust, dirt, and hair spray. If cleaning is required, turn off the appliance and use a cloth to wipe the exterior. In the event of a malfunction, do not attempt to repair the appliance as it does not have user-serviceable parts.

Storage

Allow appliance to cool and store out of reach of children in a safe, dry location. Never wrap the USB cord around the appliance because this will cause the cord to wear prematurely and break. Handle cord carefully for longer life and avoid jerking, bending sharply, twisting, or straining cord, especially at plug connections.

Please store your product at an ambient temperature range of 39°F ~ 104°F (4°C-40°C)when it is not in use.

FCC Statement

This device complies with Part 15 of the FCC Rule. Operation is subject to the following two conditions:

- (1) This device may not cause harmful interference.
- (2) This device must accept any interference received, including interference that may cause undesired operation.

WARNING

Changes or modifications to this unit not expressly approved by the party

responsible for compliance could avoid the user's authority to operate the equipment.

⚠ NOTE:

This equipment has been tested and found to comply with the limits for a Class B digital device, protection against harmful interference in a residential installation. This equipment generates, uses and can radiate radio frequency energy and, if not installed communications.

However, there is no guarantee not occur in a particular installation. If this that interference will equipment does cause harmful interference to radio or television reception, which can be determined by turning the equipment off and on, the user is encouraged to try to correct the interference by one or more of the following measures:

- Reorient or relocate the receiving antenna.
- Increase the separation between the equipment and receiver.
- Connect the equipment into an outlet on a circuit different from that to which the receiver is connected.
- Consult the dealer or an experienced radio/TV technician for help.

Warranty

The product warranty is governed by regulations in force and applied upon showing the original legible purchase receipt complete of all its parts. For support service under warranty, please take the original purchase receipt to the store where the product was purchased.

Membership Registration
- Go Online NOW!



SCAN TO JOIN



www.tymobeauty.com



@tymo



@tymo_fashiontech